



Compressor  
Voltage Code : XG

# FH4525Y-XG

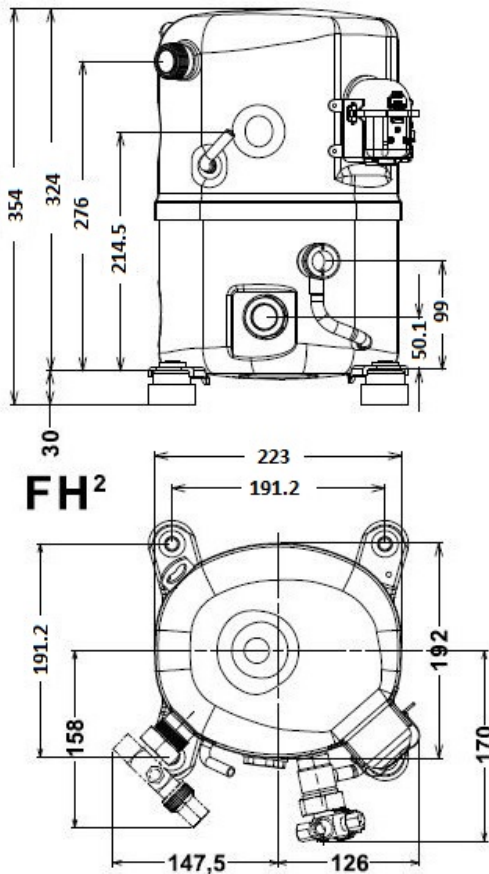
High Temp. Commercial (HP)

380-420V 3~ 50Hz / 460V 3~ 60 Hz

R134a / R513A

## FH4525Y-XG1A

Conditions	Frequency	Nominal Cooling Capacity		Sound Power ISO3745 / ISO 3743-1
		Watts	BTU/h	
EN12900_MHP / R134a	50 Hz / 60 Hz	2703 / 3198	9218 / 10905	71 dBA
EN12900_MHP / R513A	50 Hz / 60 Hz	2876 / 3402	9807 / 11602	71 dBA



<b>Displacement (cc)</b>	63
<b>Net Weight (Kg)</b>	29.0
<b>Oil Quantity (cc)</b>	1140.0
<b>Oil Type</b>	Polyolester
<b>Expansion Device</b>	Capillary_Tube/Expansion_Valve
<b>Cooling</b>	Fan
<b>Main Winding (Ohm)</b>	7.05
<b>Current</b>	
RLA (A)	3.4   3.4
MCC (A)	5.9
LRA (A)	26
<b>Electrical Equipment</b>	TRI
<b>Overload</b>	Interne
<b>Refrigerating connection for</b>	
Suction Tube	15.9 (5/8")
Discharge Tube	12.7 (1/2")
Process Tube	6.35 (1/4")

\* EN12900\_MHP : T°Cond. 45.0°C / T°Evap. -10.0°C / T°Return gas temp.. 20.0°C  
T°Subcooling. 0.0K

Certificates :



Note : Tecumseh reserves the right to change information contained in this document without notification.



**Tecumseh**

<b>FH4525Y-XG</b>	<b>Tension XG : 380-420V 3~ 50Hz / 460V 3~ 60 Hz</b>
-------------------	--

Les performances sont données dans les **conditions EN12900\_MHP** :  
 Condition Dew  
 The performance data are in **EN12900\_MHP conditions** :  
 Dew Condition

Gaz aspirés : 20.0 °C  
 Sous refroidissement : 0.0 K  
 Return gas : 20.0 °C  
 Subcooling : 0.0 K

© 2023 Tecumseh Products Company  
All rights reserved

**50 Hz R134a**

**N°User-359**

4   T condensation	5   T évaporation	(°C)	-25	-20	-15	-10	-5	0	5	10	15
<b>30</b>	1   P frigorifique	(Watt)	1399	2013	2755	3645	4703	5949	7404	9088	11020
	2   P absorbée	(W)	811	924	1032	1136	1235	1330	1422	1509	1594
	3   I absorbée	(A)	1.47	1.70	1.92	2.13	2.32	2.49	2.65	2.80	2.93
<b>40</b>	1   P frigorifique	(Watt)	1013	1568	2226	3006	3930	5017	6287	7762	9459
	2   P absorbée	(W)	810	954	1094	1232	1368	1502	1634	1764	1893
	3   I absorbée	(A)	1.37	1.67	1.95	2.22	2.48	2.72	2.95	3.16	3.36
<b>50</b>	1   P frigorifique	(Watt)		1151	1732	2412	3209	4144	5238	6510	7980
	2   P absorbée	(W)		945	1121	1297	1473	1648	1824	2000	2177
	3   I absorbée	(A)		1.62	1.97	2.31	2.63	2.94	3.23	3.51	3.77
<b>60</b>	1   P frigorifique	(Watt)			1281	1867	2545	3337	4261	5338	6589
	2   P absorbée	(W)			1119	1336	1555	1776	1999	2225	2453
	3   I absorbée	(A)			1.98	2.38	2.77	3.14	3.50	3.85	4.18

**60 Hz R134a**

**N°User-359**

4   T condensation	5   T évaporation	(°C)	-25	-20	-15	-10	-5	0	5	10	15
<b>30</b>	1   P frigorifique	(Watt)	1657	2384	3261	4313	5565	7038	8759	10750	13035
	2   P absorbée	(W)	981	1121	1254	1381	1503	1619	1731	1839	1944
	3   I absorbée	(A)	1.47	1.70	1.92	2.13	2.32	2.49	2.65	2.80	2.93
<b>40</b>	1   P frigorifique	(Watt)	1198	1855	2633	3557	4650	5936	7439	9182	11190
	2   P absorbée	(W)	974	1153	1326	1496	1661	1823	1982	2139	2294
	3   I absorbée	(A)	1.37	1.67	1.95	2.22	2.48	2.72	2.95	3.16	3.36
<b>50</b>	1   P frigorifique	(Watt)		1360	2049	2853	3797	4904	6198	7703	9443
	2   P absorbée	(W)		1138	1358	1575	1790	2003	2215	2425	2636
	3   I absorbée	(A)		1.62	1.97	2.31	2.63	2.94	3.23	3.51	3.77
<b>60</b>	1   P frigorifique	(Watt)			1514	2208	3012	3949	5044	6320	7802
	2   P absorbée	(W)			1348	1619	1888	2158	2428	2699	2971
	3   I absorbée	(A)			1.98	2.38	2.77	3.14	3.50	3.85	4.18

1 = cooling capacity 2 = power input 3 = current 4 = condensing temperature 5 = evaporating temperature

**Nota : Tecumseh se réserve le droit de modifier les informations contenues dans ce document sans préavis.**

**Note : Tecumseh reserves the right to change information contained in this document without notification.**



**Tecumseh**

<b>FH4525Y-XG</b>	<b>Tension XG : 380-420V 3~ 50Hz / 460V 3~ 60 Hz</b>
-------------------	--

Les performances sont données dans les <b>conditions EN12900_MHP</b> :	Gaz aspirés :	20.0 °C
Condition Dew	Sous refroidissement :	0.0 K
The performance data are in <b>EN12900_MHP conditions</b> :	Return gas :	20.0 °C
Dew Condition	Subcooling :	0.0 K

© 2023 Tecumseh Products Company  
All rights reserved

### 50 Hz R513A

N°User-360

4   T condensation	5   T évaporation	(°C)	-25	-20	-15	-10	-5	0	5	10	15
<b>30</b>	1   P frigorifique	(Watt)	1611	2277	3055	3961	5011	6219	7602	9173	10950
	2   P absorbée	(W)	901	1014	1118	1217	1316	1419	1530	1655	1796
	3   I absorbée	(A)	1.64	1.87	2.08	2.28	2.47	2.66	2.85	3.07	3.30
<b>40</b>	1   P frigorifique	(Watt)	1139	1734	2426	3230	4160	5233	6464	7867	9458
	2   P absorbée	(W)	884	1036	1178	1314	1447	1584	1727	1882	2052
	3   I absorbée	(A)	1.49	1.81	2.10	2.37	2.62	2.87	3.12	3.37	3.64
<b>50</b>	1   P frigorifique	(Watt)		1253	1847	2537	3337	4263	5330	6553	7949
	2   P absorbée	(W)		1007	1194	1374	1551	1728	1911	2104	2311
	3   I absorbée	(A)		1.73	2.10	2.45	2.77	3.08	3.39	3.69	4.01
<b>60</b>	1   P frigorifique	(Watt)			1358	1922	2581	3348	4241	5273	6461
	2   P absorbée	(W)			1172	1403	1630	1857	2087	2326	2577
	3   I absorbée	(A)			2.07	2.50	2.91	3.29	3.66	4.02	4.39

### 60 Hz R513A

N°User-360

4   T condensation	5   T évaporation	(°C)	-25	-20	-15	-10	-5	0	5	10	15
<b>30</b>	1   P frigorifique	(Watt)	1908	2696	3616	4688	5930	7359	8993	10851	12951
	2   P absorbée	(W)	1090	1230	1357	1479	1601	1727	1864	2017	2191
	3   I absorbée	(A)	1.64	1.87	2.08	2.28	2.47	2.66	2.85	3.07	3.30
<b>40</b>	1   P frigorifique	(Watt)	1347	2052	2871	3821	4922	6192	7647	9307	11189
	2   P absorbée	(W)	1062	1252	1428	1594	1757	1923	2096	2282	2487
	3   I absorbée	(A)	1.49	1.81	2.10	2.37	2.62	2.87	3.12	3.37	3.64
<b>50</b>	1   P frigorifique	(Watt)		1481	2184	3001	3948	5044	6307	7755	9406
	2   P absorbée	(W)		1212	1446	1669	1885	2100	2321	2551	2798
	3   I absorbée	(A)		1.73	2.10	2.45	2.77	3.08	3.39	3.69	4.01
<b>60</b>	1   P frigorifique	(Watt)			1605	2273	3053	3963	5020	6243	7650
	2   P absorbée	(W)			1411	1700	1980	2256	2535	2821	3121
	3   I absorbée	(A)			2.07	2.50	2.91	3.29	3.66	4.02	4.39

1 = cooling capacity 2 = power input 3 = current 4 = condensing temperature 5 = evaporating temperature

**Nota : Tecumseh se réserve le droit de modifier les informations contenues dans ce document sans préavis.**

**Note : Tecumseh reserves the right to change information contained in this document without notification.**